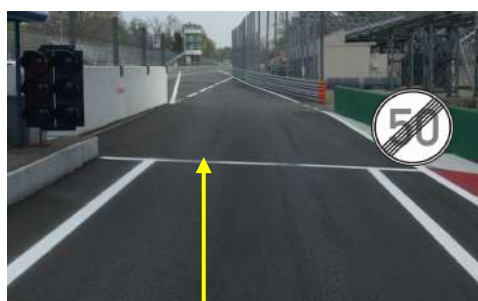
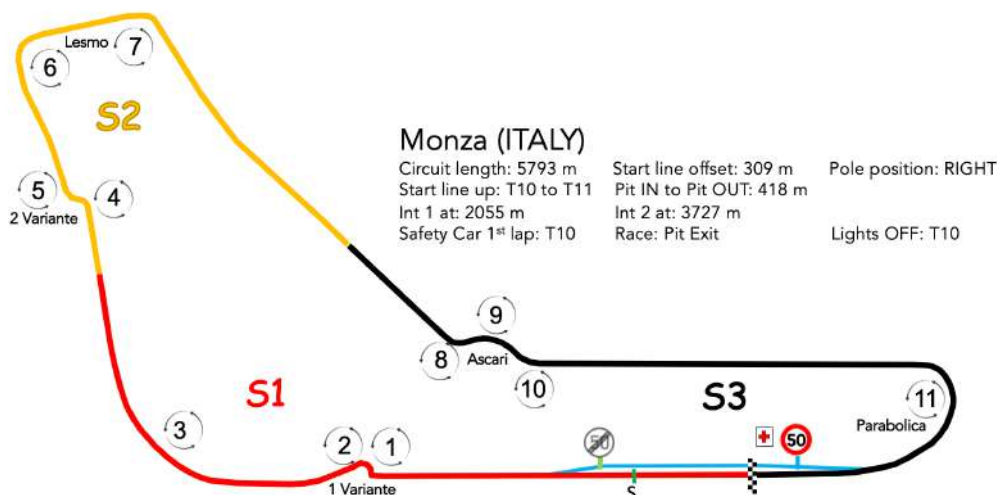


Team Manager & driver briefing

1. EVENT SPECIFIC DATA

- 1.1 Notice board: "<https://www.gt-world-challenge-europe.com>" - Calendar MONZA- Click on "Notice Board"
- 1.2 Race director radio: RACE CONTROL 7 – 468.1875. Radio Check 10 to 15 minutes before each session, all teams to answer OK + Car # on the team messaging App for the 1st session of the day. In case of issue contact the Pit Lane manager.
- 1.3 Do not cross the white line exiting the pit lane, a blue flashing light at pit exit warns drivers leaving the pits of others cars approaching on the track and a blue flag right hand side after pit exit warns drivers on track of cars leaving the pit lane.
- 1.4 Track limits in turn 4 keep right of the yellow line and join the escape road and re-join when it is safe to do so.
- 1.5 Safe positions are marked in ORANGE.
- 1.6 Attention new gravel beds.



2. GENERAL INFO

- 2.1 To receive the official documents by Mail (add or remove addresses), contact Murielle the secretary in charge of communications on sporting@sro-motorsports.com
- 2.2 Team messaging App: create an account on "<https://gtwce.minsh.com>". The App will be used to send Summons, Request forms, incident reports (forms available on the team section), decisions and other urgent information. The "incident reports" can be used only if you are directly involved. If you are not directly involved you have to enter an official protest to the stewards.
- 2.3 Pit Lane: 50 KPH. Penalty Box: In front of your pit garage controlled by the team.
- 2.4 FCY & SC procedure priority on the in-car marshalling system
- 2.5 "FAST LANE OPEN" signal may be given from five minutes before the start of the session to allow cars to line up at pit Exit. In case of red flag stop in front of your pit garage not in the fast lane.
- 2.6 The driver causing a red flag situation during qualifying will have his best time so far in the session cancelled.
- 2.7 Incidents involving different categories, the more PRO Cat will be deemed to be at fault unless evidence clearly shows the contrary,
- 2.8 Wheels (warm tyres) to the grid - before pit lane closes,
- 2.9 Pit gantry cameras mandatory recording during all sessions - pit stops – Correct time set on the camera.
- 2.10 Nobody in front of the car or standing behind the panels - use lollipops.
- 2.11 On track, flashing head lights Max 3 times between two corners,
- 2.12 CAR POSITION: Beginning of each session 45° nose in direction of pit exit, race and pit stop practice in parallel and other works inside the garages if permitted.

- 2.13 CONTACT: by mail on alain@sro-motorsports.com. Messages on the App, NO personal messages, only everybody messages.
- 2.14 For insurance reports please send me a message with the following info: Team official name – Session - date / time of the incident - location - Driver - Incident

3. FULL COURSE YELLOW (FCY) & SAFETY CAR (SC)

- 3.1 The FCY can be used during all sessions. Instructions will be given on the Team Radio and on the screens: « FCY in 20 seconds”, “10 seconds – BOARDS”, “5, 4, 3, 2, FCY”. The marshalling system provide the official info driver.
- 3.2 The FCY boards (not the flags) will be presented at the 10 seconds signal - overtaking is forbidden.
- 3.3 At Zero boards and waved yellow flags will be shown at all marshal posts and all cars must be at a constant speed of 80 KPH. Overtaking remain forbidden and cars must proceed in single file. The board and flag will also be shown at the Line and at pit EXIT. If appropriate, double waved yellow flags will continue to be displayed at the post prior to the incident.
- 3.4 The pit lane entry and exit will remain open.
- 3.5 In the case of a short FCY, before to end the procedure the information « Restart on short notice » will be given on team radio. To end the information “Green flag” will be given on the monitors and on the radio. FCY board will be removed and green flags will be shown at all marshal posts. It will also be shown at the Line and at pit EXIT.
- 3.6 An FCY period will always be declared before the SC is deployed, except during the 3 first laps. The SC will enter the track during the FCY procedure to catch the leader. If necessary, it will overtake cars or will use a green light to signal to any cars between it and the race leader that they should pass. When the SC procedure will be declared it will turn on its lights and the SC boards will replace the FCY. The cars must form in single file behind the SC no more than five car lengths apart, and overtaking remain forbidden until the cars pass the Line after the SC has returned to the pits.
- 3.7 In case of wave-by; “SAFETY CAR LIGHTS ON – PIT ENTRY CLOSED” – “SC AND CARS MOVE LEFT – PREPARE FOR WAVE-BY PROCEDURE-CARS ELIGIBLE FOR WAVE BY MOVE RIGHT” Eligible cars move right remaining in the fixed order. “SC GREEN LIGHTS ON – WAVE-BY”: Eligible cars to overtake the SC and catch the queue quickly and safely. “SC SWITCH OFF THE GREEN LIGHTS – WAVE-BYCOMPLETED-PITLANE OPEN”
- 3.8 End of procedure: “SC IN THIS LAP” – “SC LIGHTS OFF” signalling removed – “ GREEN” no overtaking prior to pass the line
- 3.9 During the SC procedure Pit Exit remain GREEN. When the SC will pass the START Line pit exit will be closed (RED lights). When the last car of the group behind the SC will pass pit exit it will be GREEN again.

4. TRACK LIMITS:

- 4.1 Drivers must use the track at all times. The white lines defining the track edges. FIA rules will apply all around the circuit.
- 4.2 Should a car leave the track for any reason, the driver may rejoin when it is safe to do so and without gaining any advantage. A driver will be judged to have left the track if no part of the car remains in contact with the track.
- 4.3 During the free practice and pre-qualifying, the drivers will be warned and stopped, if necessary, lap times can be cancelled.
- 4.4 During qualifying, if you cut by mistake slow down not to improve your time in that sector. if an improvement is detected the lap time will be deleted. On the third time the best lap time of the driver will be deleted.
- 4.5 During the race, if you gain a position or any advantage by cutting give it back as soon as possible. Any car, which is suspected of gaining any sort of advantage from doing so, will be penalized.
- 4.6 The team will be warned on the timing monitors, the 4th time the car will get a warning flag. After a final warning, At the 6th time the stewards can impose a penalty.

5. RACE:

- 5.1 The start countdown will be announced by means of boards. Start: Red lights turned to Green. NO weaving from Turn 8. Lining up from Turn 10. At Turn 11 cars must be properly lined-up and tightly grouped for the rolling start. The leading car will slow down to 50 KPH and enter the pit lane. At the exit of the last turn the leader may increase his speed to 110 KPH. All cars must pass above the grid boxes for the standing start. Cars are racing when the lights turn to green. Any driver outside the 2 x 2 formation before the lights go green will be penalized for jumped start.
- 5.2 If there is a problem during the formation lap, the leading car will remain in front of the cars and the red lights will remain ON. Yellow waved flags will be shown all around the circuit. In case the problem happens after the leading car has left the track, the pole man will be in charge of the speed. The start will be declared at the end of the first formation lap.

Alain ADAM
Race Director