

TEAM MANAGERS' & DRIVERS' BRIEFING



WORLD CHALLENGE

EUROPE

**POWERED
BY**

aws



Nürburgring (GERMANY) GP FIM chicane

Circuit length: 5137 m

Start line offset: 0 m

Pole Position: RIGHT

Int 1 at: 2302 m

Int 2 at: 4325 m

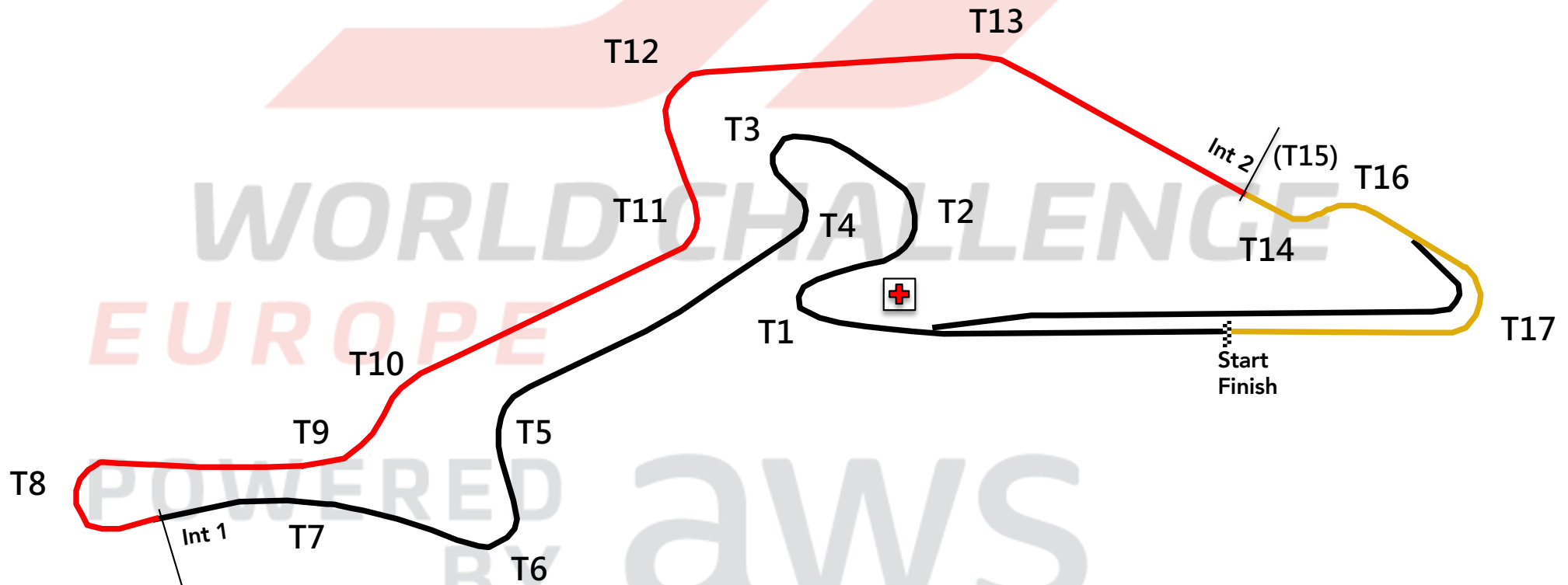
Start line up: T12 to T14

SC position: 1st lap- T12 (MP 41)

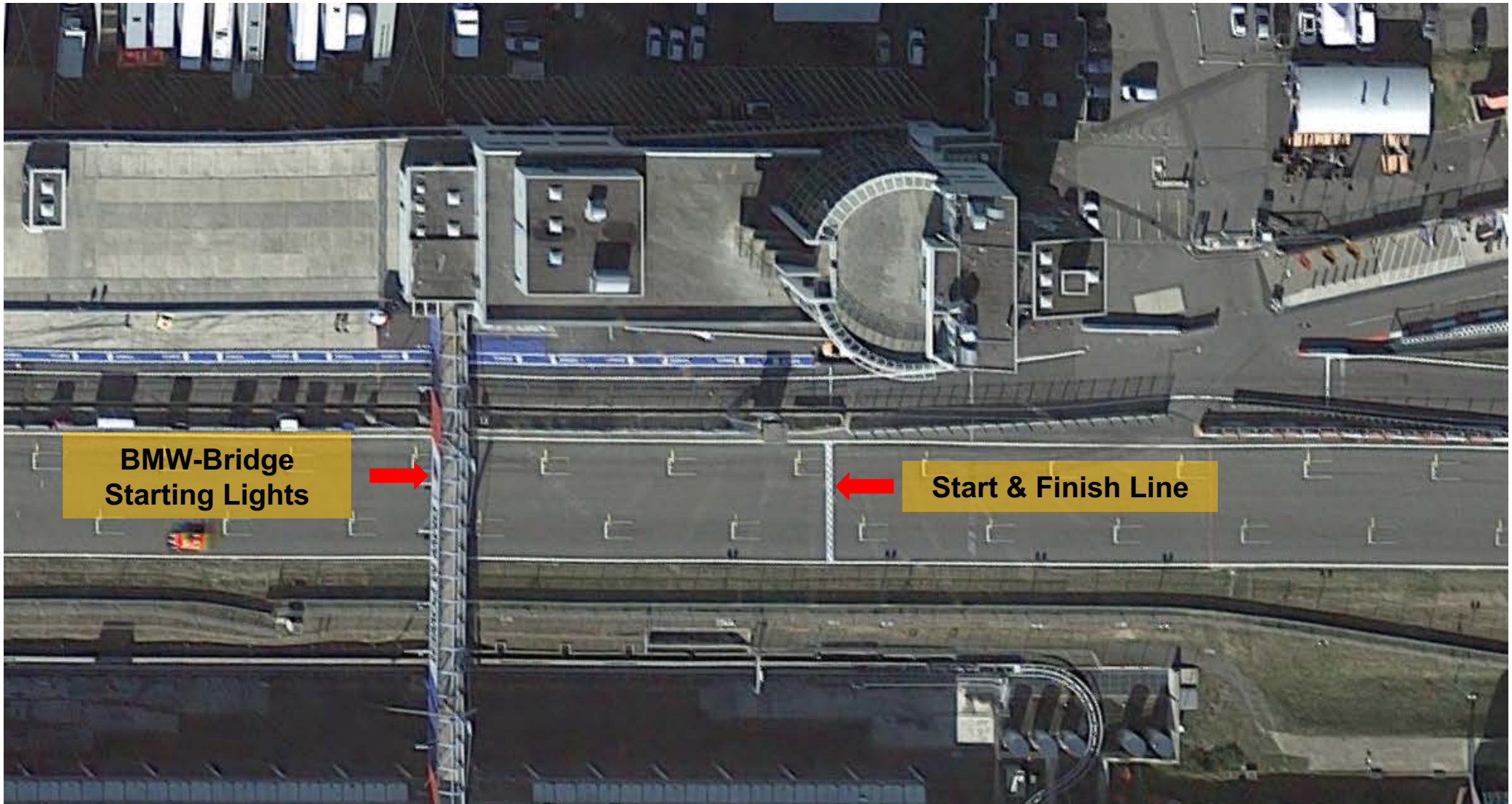
Race- Pit Exit

Lights OFF: T12

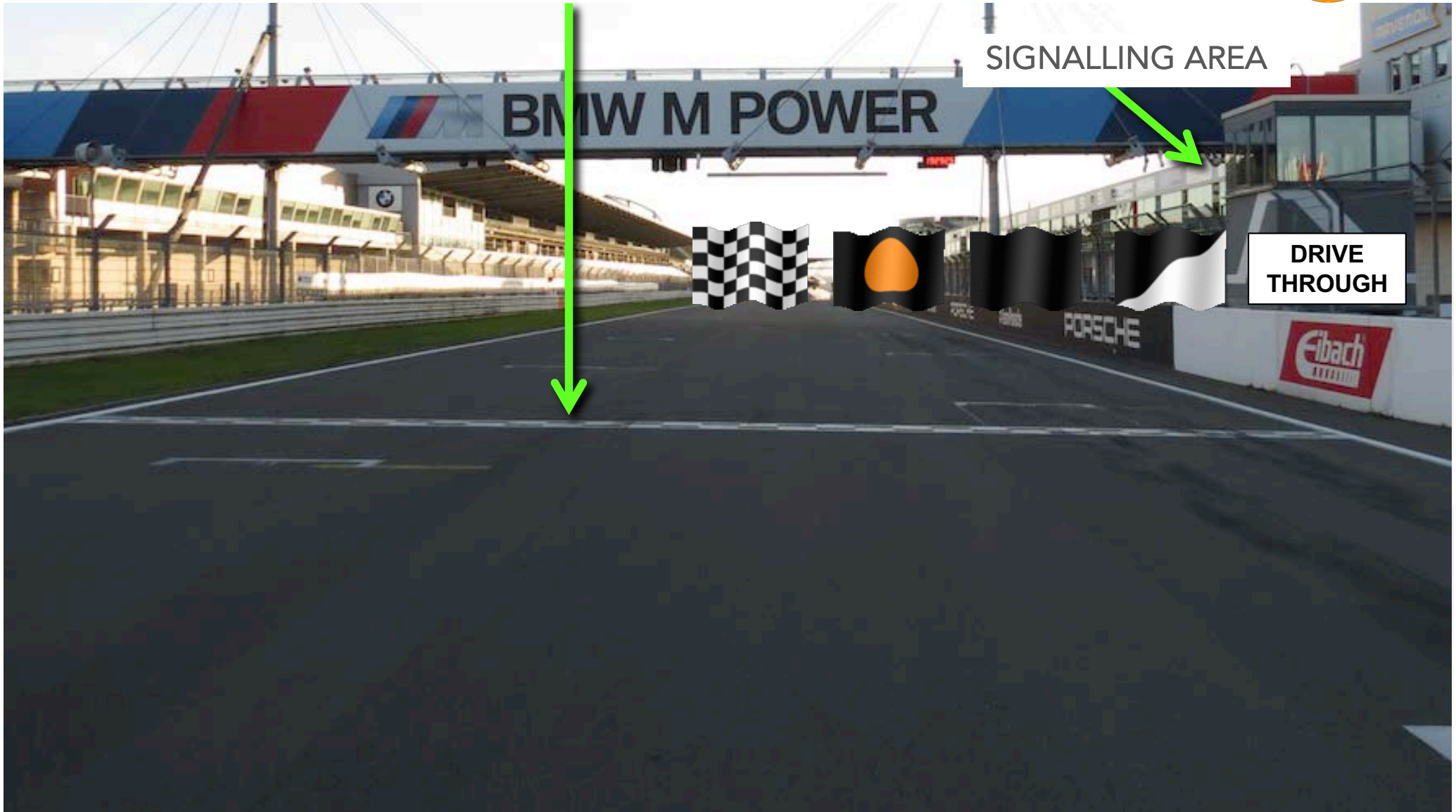
Pit IN to pit OUT: 378,2 m



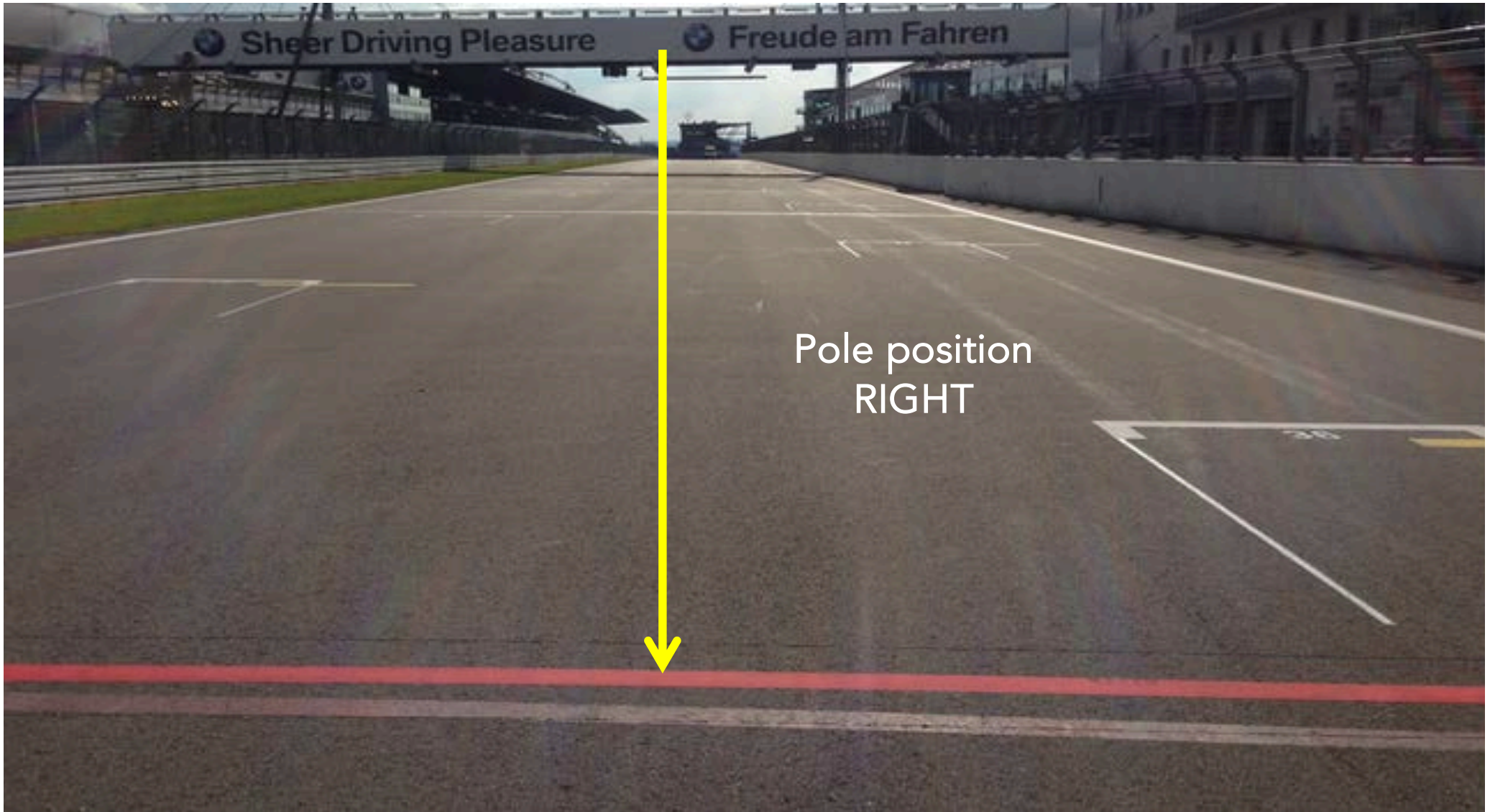
CONTROL, START, FINISH LINES



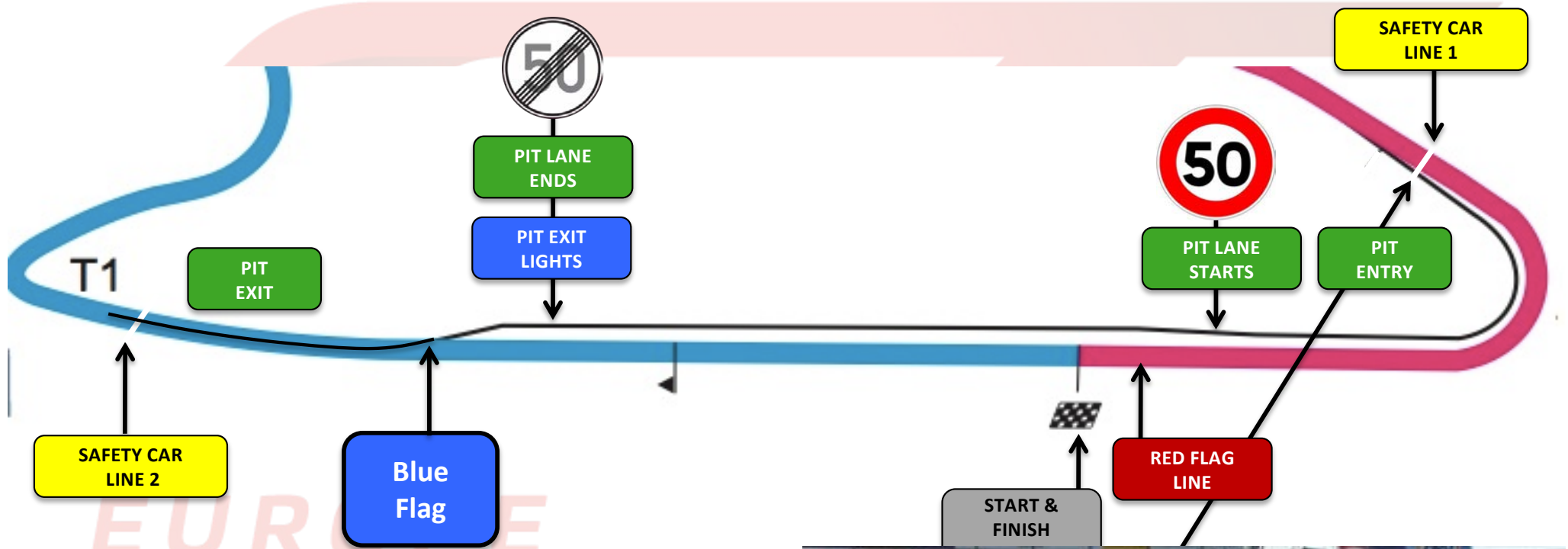
CONTROL, START, FINISH LINES



RED LINE 50m before the line



PIT LANE



STOP AND GO – TIME PENALTY is in front of your pit garage, controlled by the team



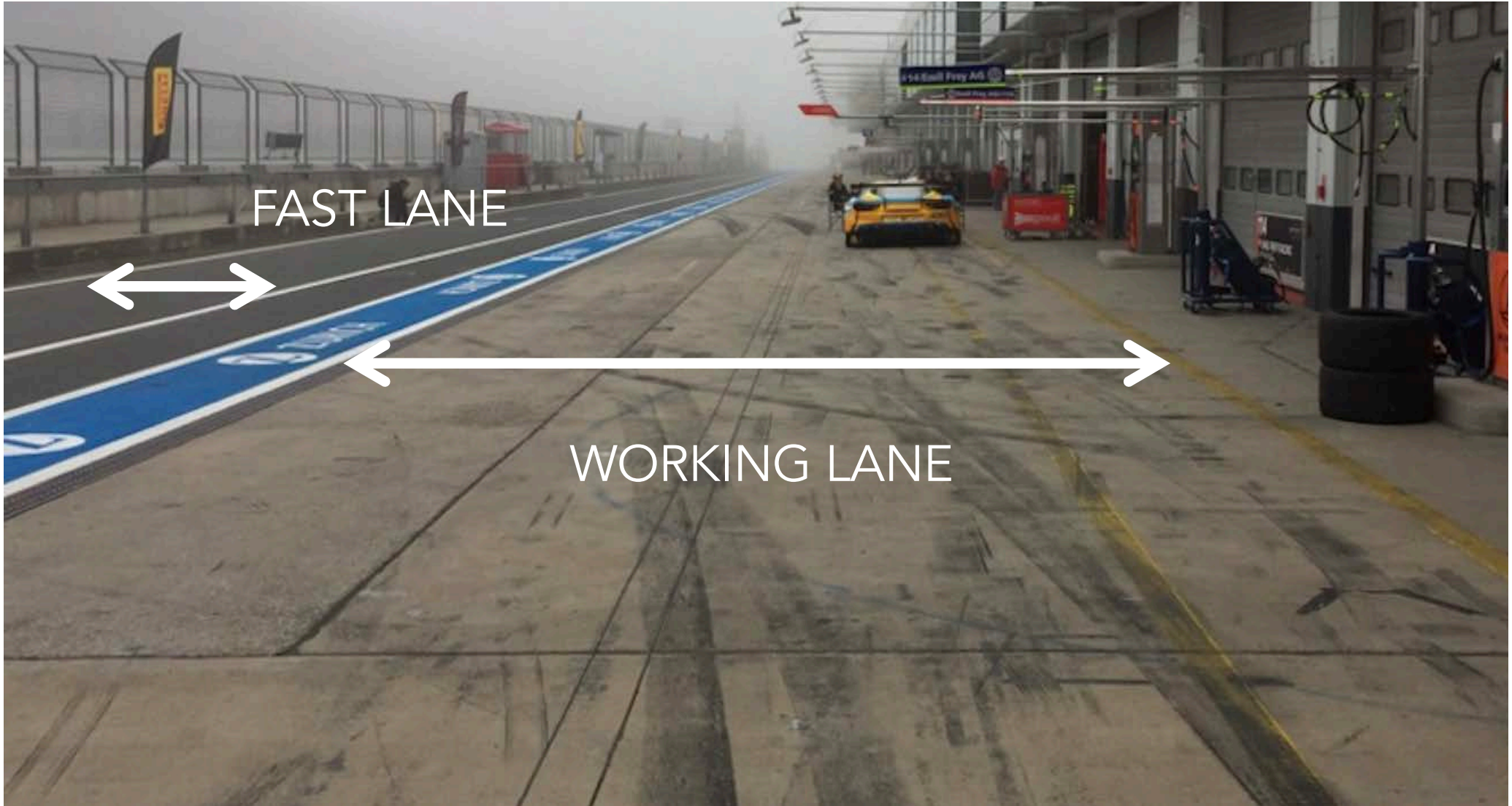
PIT ENTRY AT SC LINE 2



PIT ENTRY SPEED LIMIT



WORKING LANE



REFUELING TIME



Full Pit Stop: refuelling for minimum 37 seconds

Short Pit Stop: refuelling for maximum 10 seconds

Followed by optional tyre changes with no time limit.

Minimum Drive Through Time: Pit lane = 378,2 m = 27"

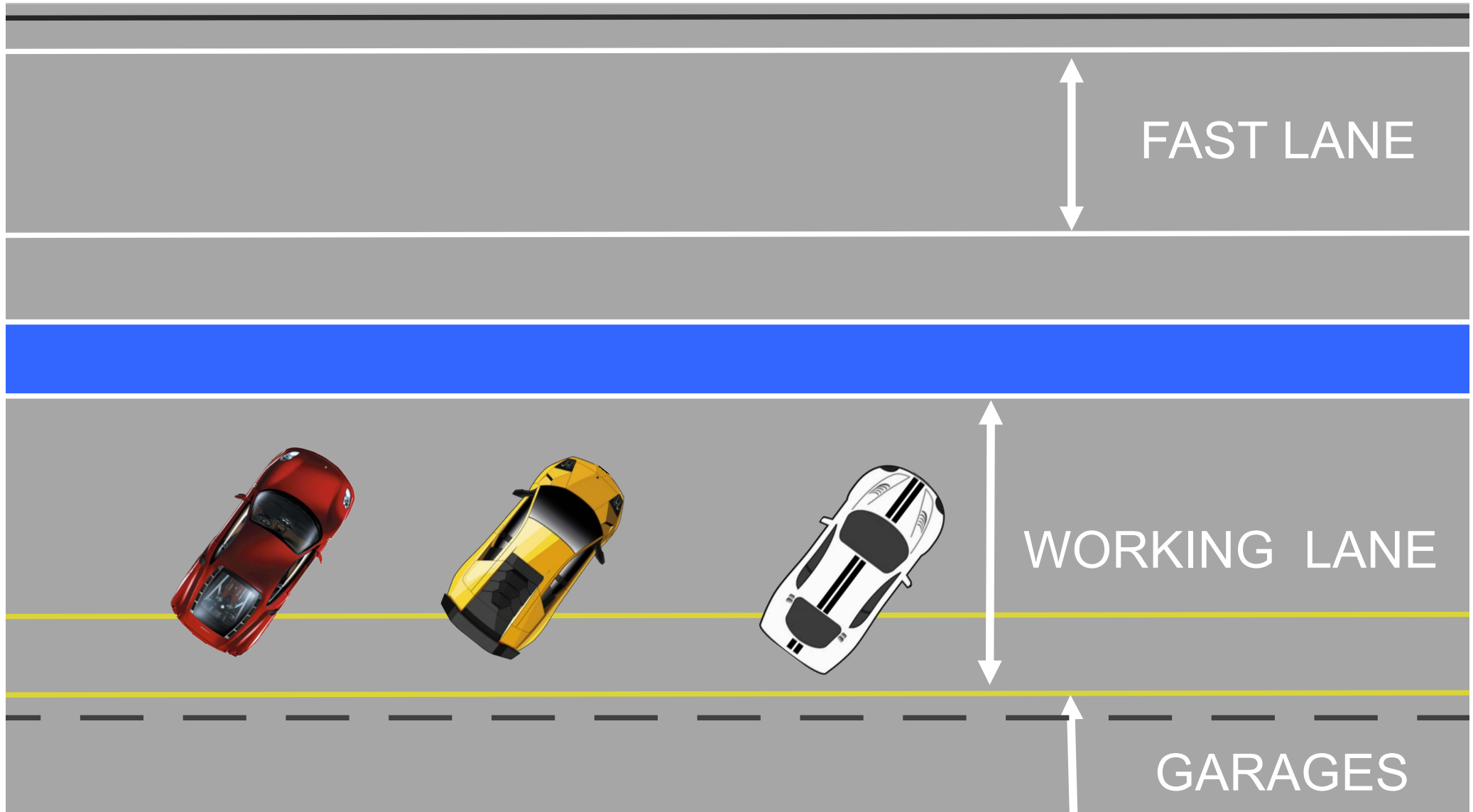
Speed in the pit lane 50 Km/Hr

No slowing or stopping, except for force majeure.

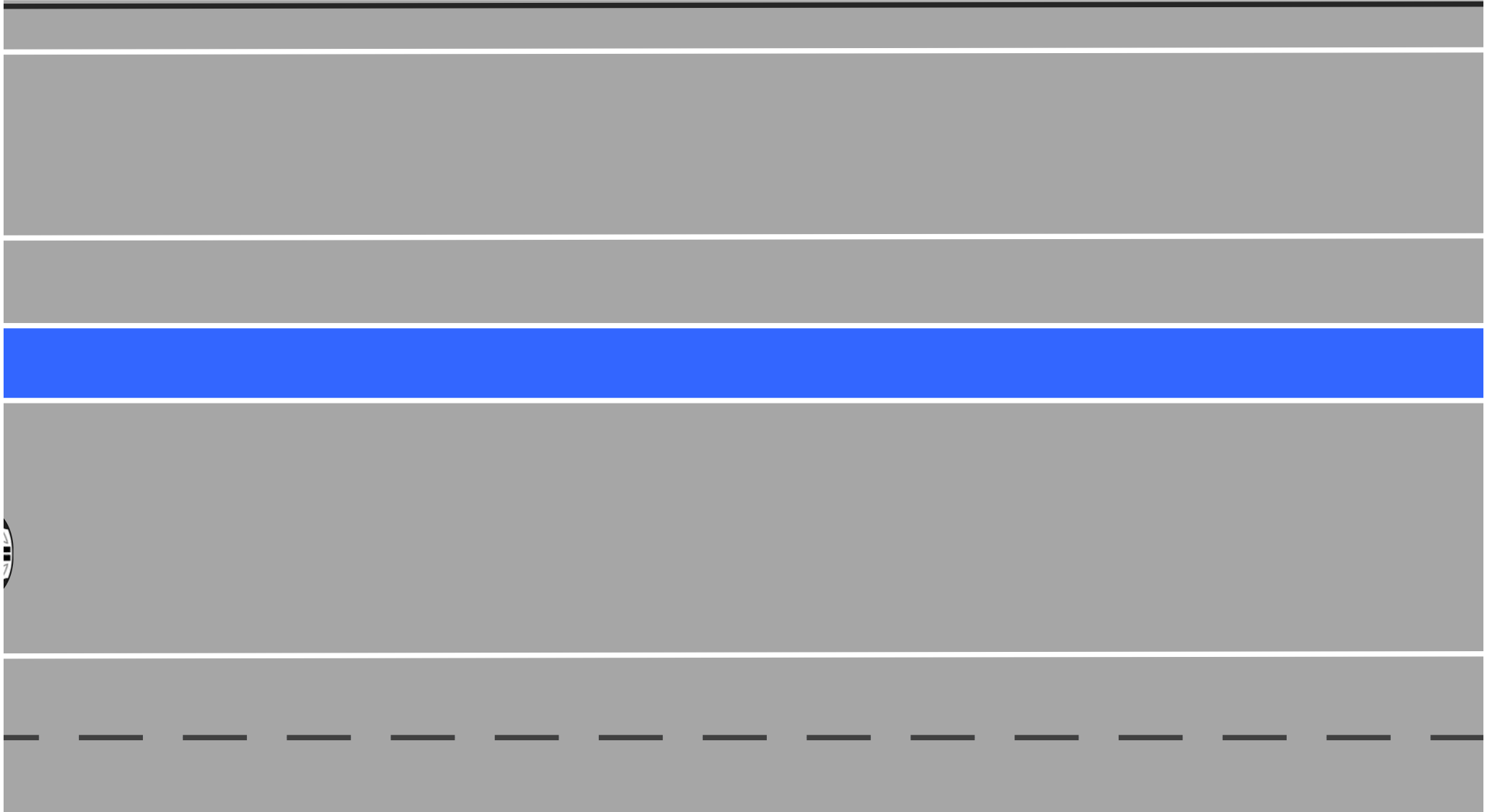
Leave the working area when the car is ready to re-join the track



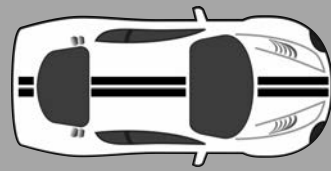
START OF ALL SESSIONS 45°



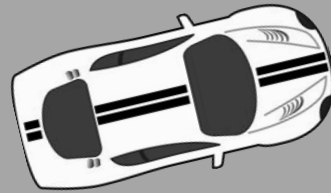
45°



45°



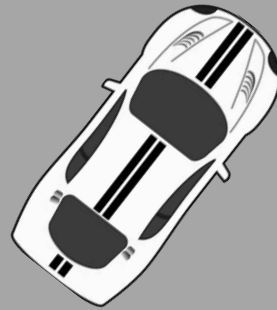
45°



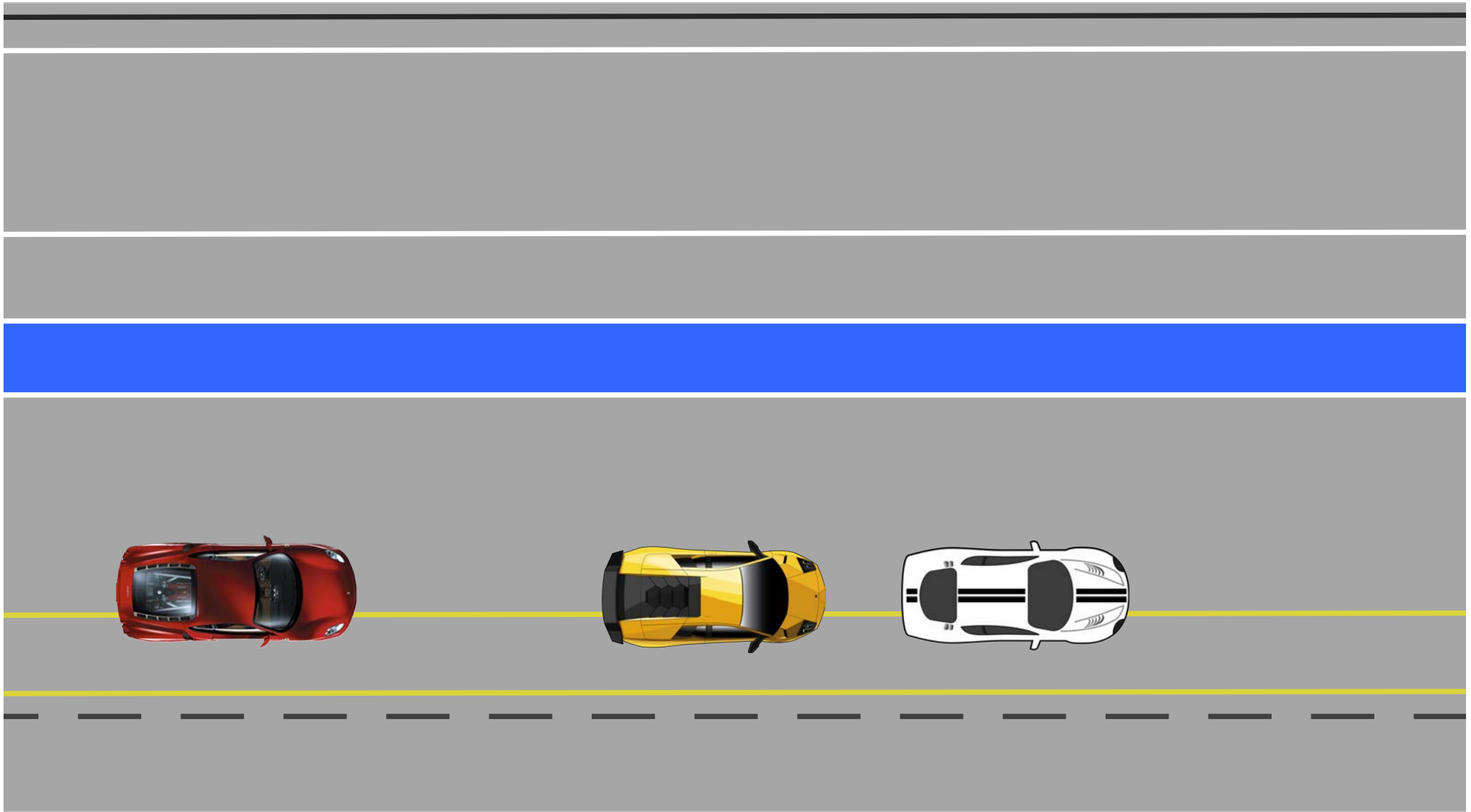
45°



45°



PIT STOP AND RACE



OTHER WORKS



A large graphic area consisting of several horizontal bands. From top to bottom: a thin black bar, a wide grey bar, another thin black bar, a wide blue bar, another wide grey bar, a thin black bar, and a wide grey bar. The bottom section of the grey bar contains five parallel yellow dashed lines sloping upwards from left to right. Below this are three car silhouettes: a red sports car on the left, a yellow sports car in the center, and a white sports car on the right. At the very bottom of the image is a row of logos: aws, PIRELLI, REBELLION TYRESPECIES, Audi Sport, ASSECOM CORSAZIONE, FAN, WING, SRO MOTORSPORTS GROUP, and 2020 INTERNATIONAL SERIES SANCTIONED BY THE FIA.



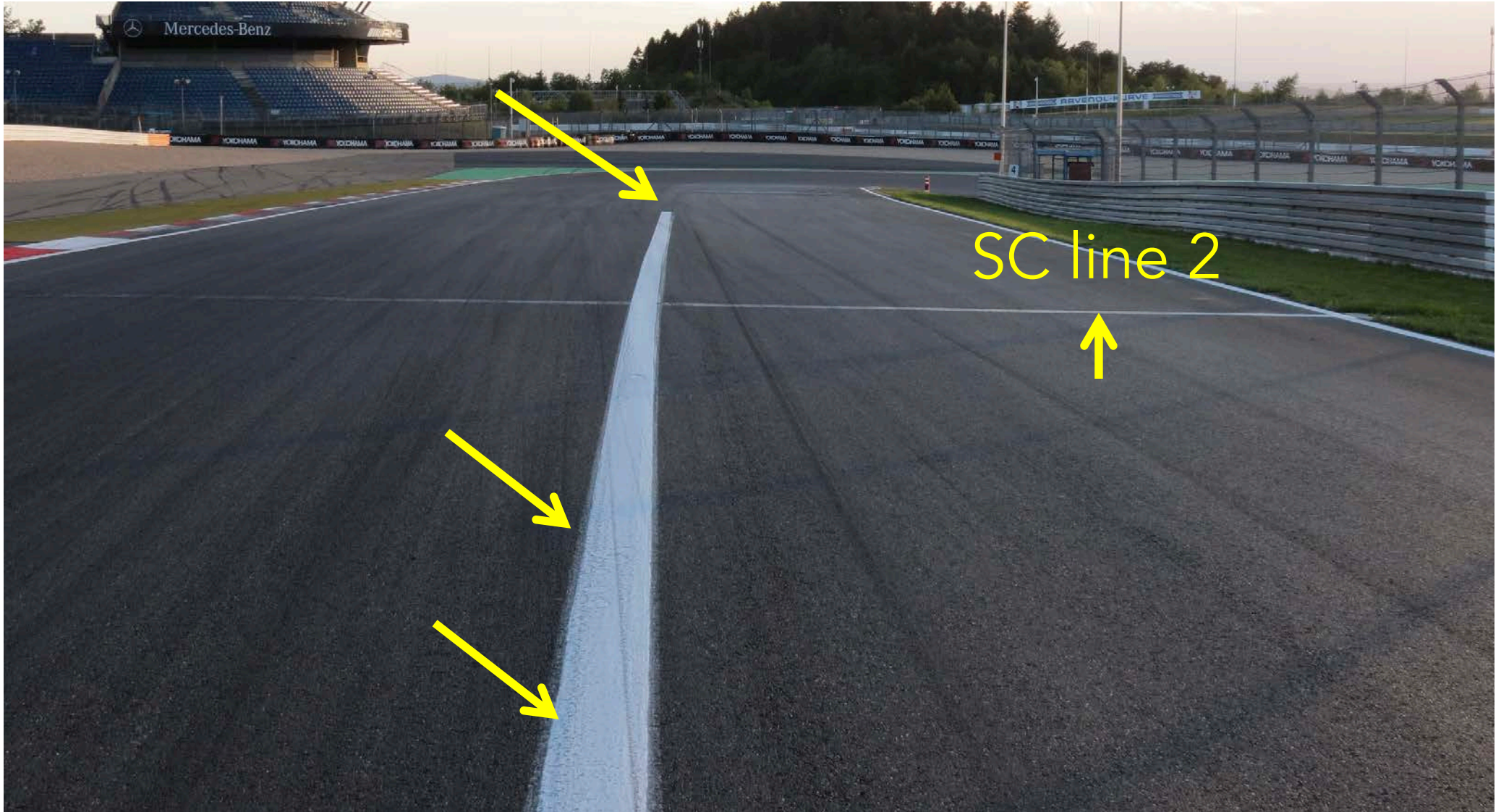
PIT EXIT SPEED LIMIT



PIT EXIT WHITE LINE



PIT EXIT WHITE LINE



Nürburgring (GERMANY) GP FIM chicane

Circuit length: 5137 m

Start line offset: 0 m

Pole Position: RIGHT

Int 1 at: 2302 m

Int 2 at: 4325 m

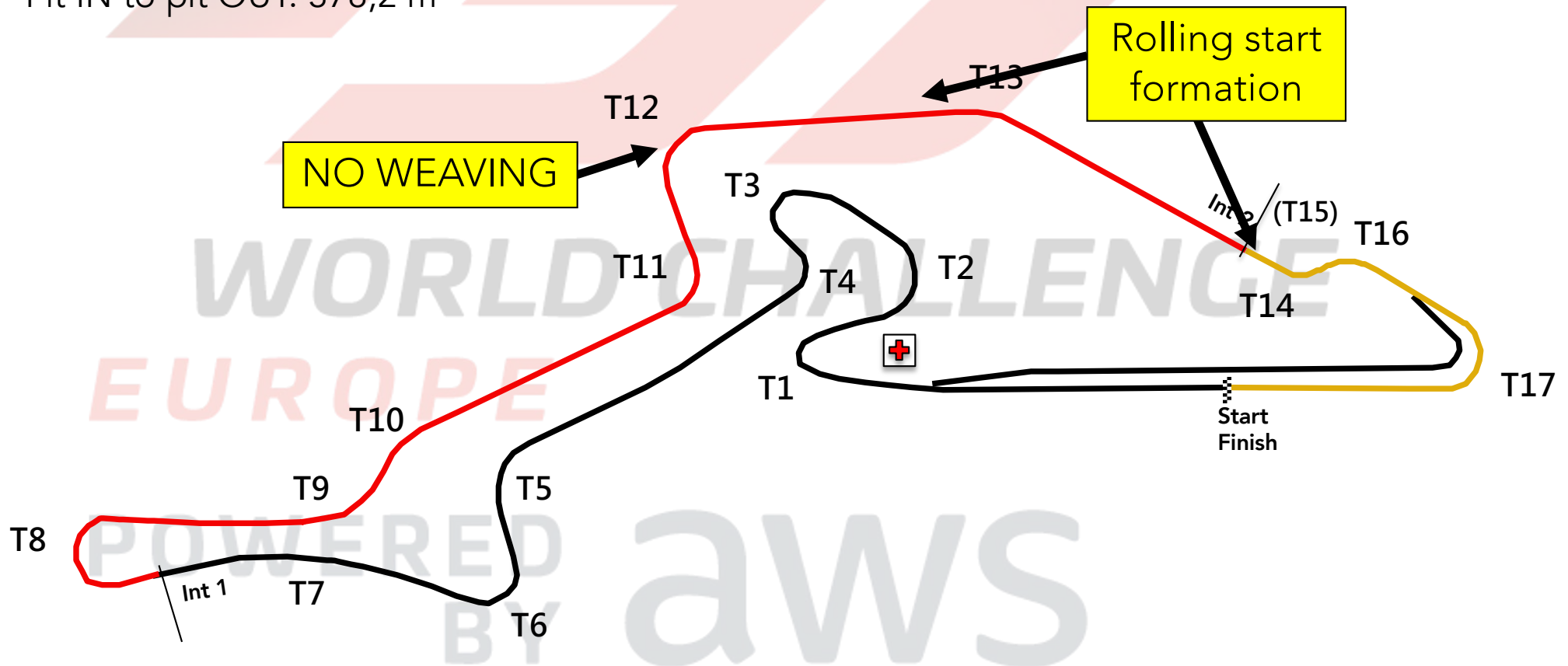
Start line up: T12 to T14

SC position: 1st lap- T12 (MP 41)

Race- Pit Exit

Lights OFF: T12

Pit IN to pit OUT: 378,2 m



ROLLING START FORMATION

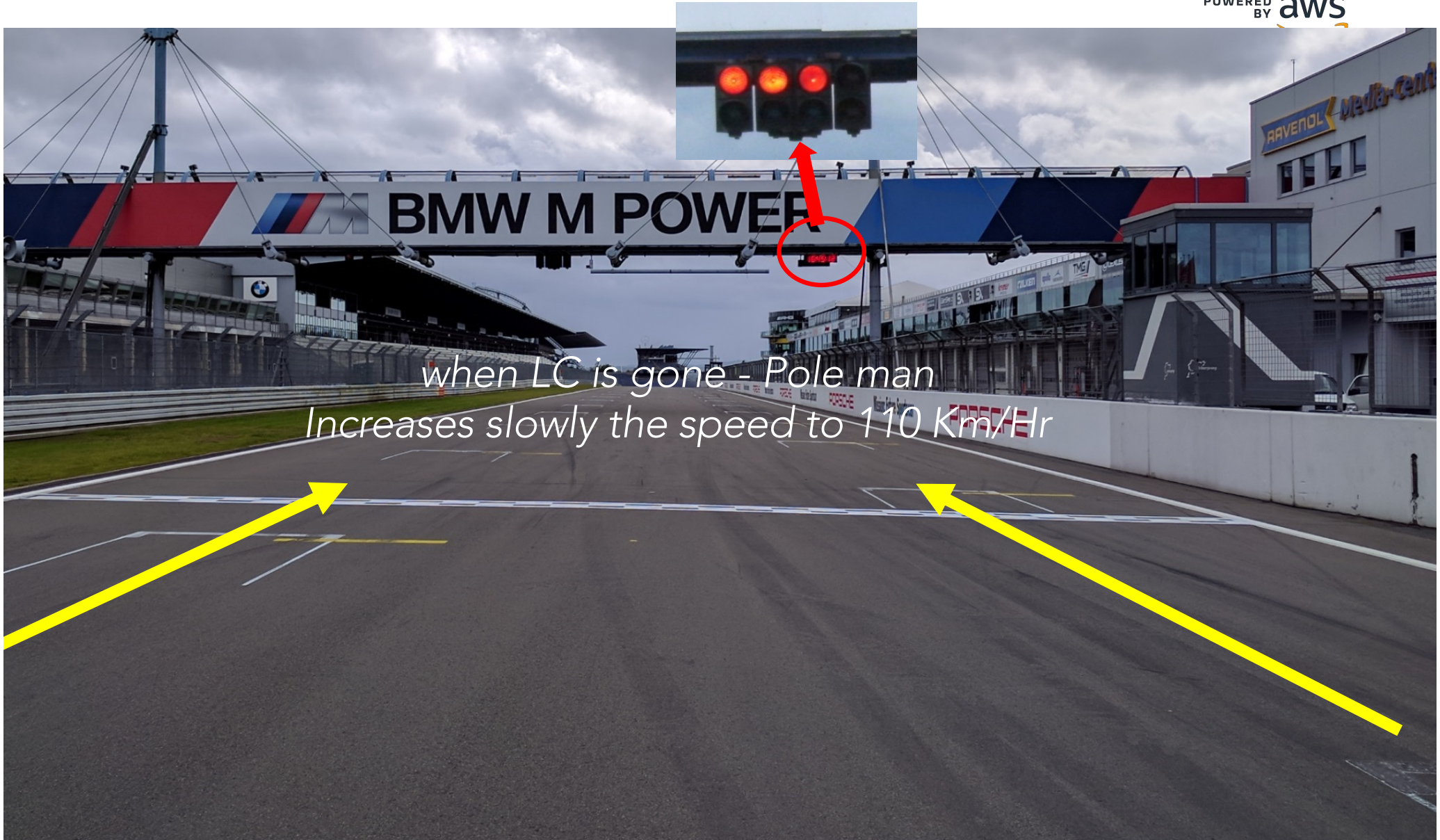


ROLLING START FORMATION



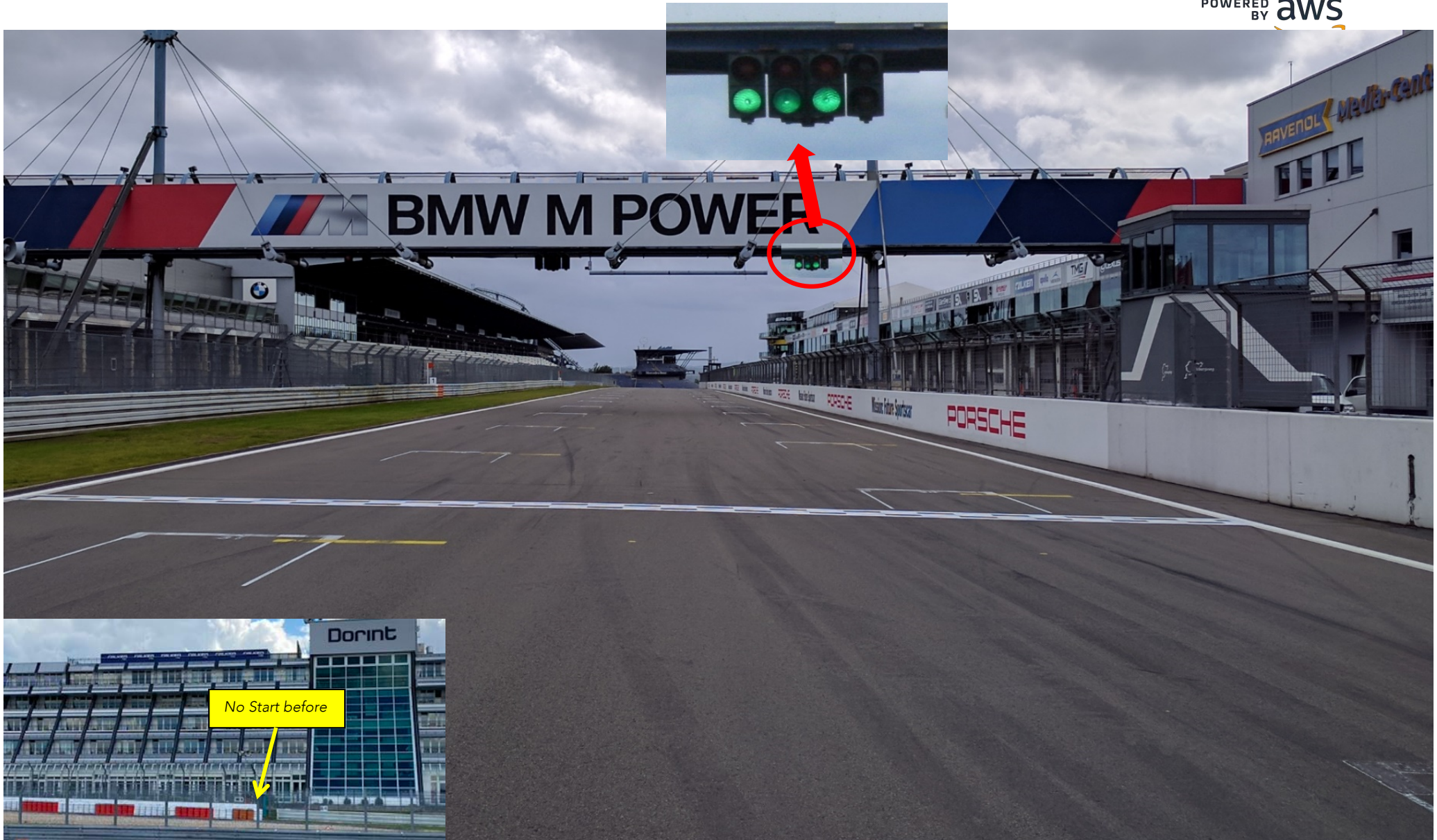
SAFETY CAR BY PIT LANE board

START



when LC is gone - Pole man
Increases slowly the speed to 110 Km/Hr

START



START



Red lights remains ON
Yellow flag @ all MP
New Formation Lap
Pole man - tempo



FCY

- Speed 80 Km/Hr – NO weaving (Zig Zag)
- FCY always followed by SC except during the three 1st laps where it will directly SC
- SC gets the leader during the FCY
- Countdown 20 seconds
 - At 10 sec boards & lights – No overtaking
 - At 0 sec yellow flags & all cars at 80 Km/Hr
 - RESTART on short notice 5, 4, 3, 2, 1 – GREEN

OR

SC



- The SC will come on track during the FCY **without lights**.
- SC gets the leader. If necessary it will overtake cars.
- No weaving, to avoid contact while the SC is overtaking
- "SAFETY CAR procedure" the SC will turn on its lights and all marshal posts will swap the FCY boards to SC.
- All cars, in single file, must increase their speed to catch up the group
- End of procedure:
 - "SC in this lap"
 - "SC lights off" – all signalling removed
 - "Green" –no overtaking prior to pass the line



Nürburgring (GERMANY) GP FIM chicane

Circuit length: 5137 m

Start line offset: 0 m

Pole Position: RIGHT

Int 1 at: 2302 m

Int 2 at: 4325 m

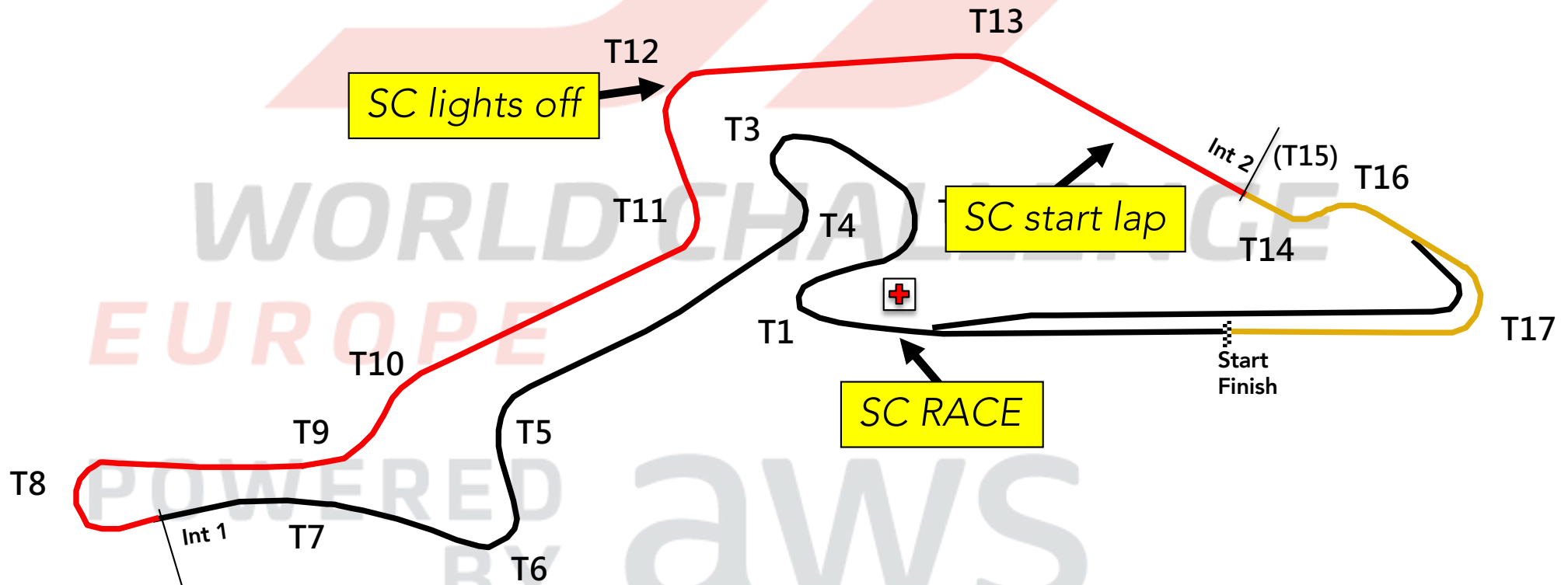
Start line up: T12 to T14

SC position: 1st lap- T12 (MP 41)

Race- Pit Exit

Lights OFF: T12

Pit IN to pit OUT: 378,2 m





PROCEDURE



*Slow down to 80 Km/Hr - NO overtaking
go to pit lane, the Clock will NOT stop except during Qual*

During the race:

- Line up at the red line or follow the SC*
- Order as when the red flag was declared*
- Teams and officials ONLY*
- Parc-Fermé conditions – Restart behind SC*

If you enter the pits after the red flag: restart one lap later



PARC-FERME



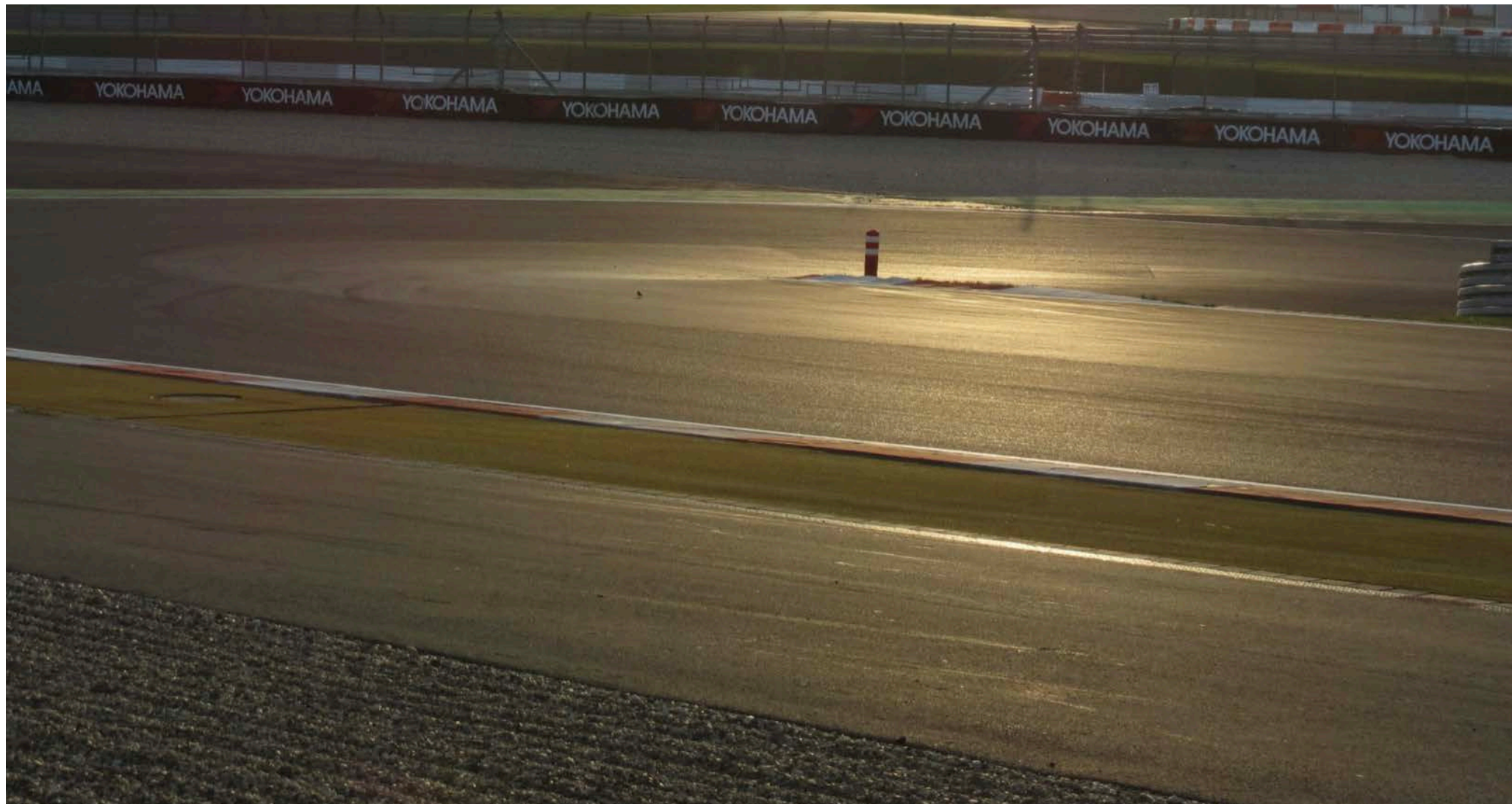
*After Q3 Inside pit garages except for cars
selected for scrutineering*

*After the Race 45° in front of the garages except for
cars selected for scrutineering*

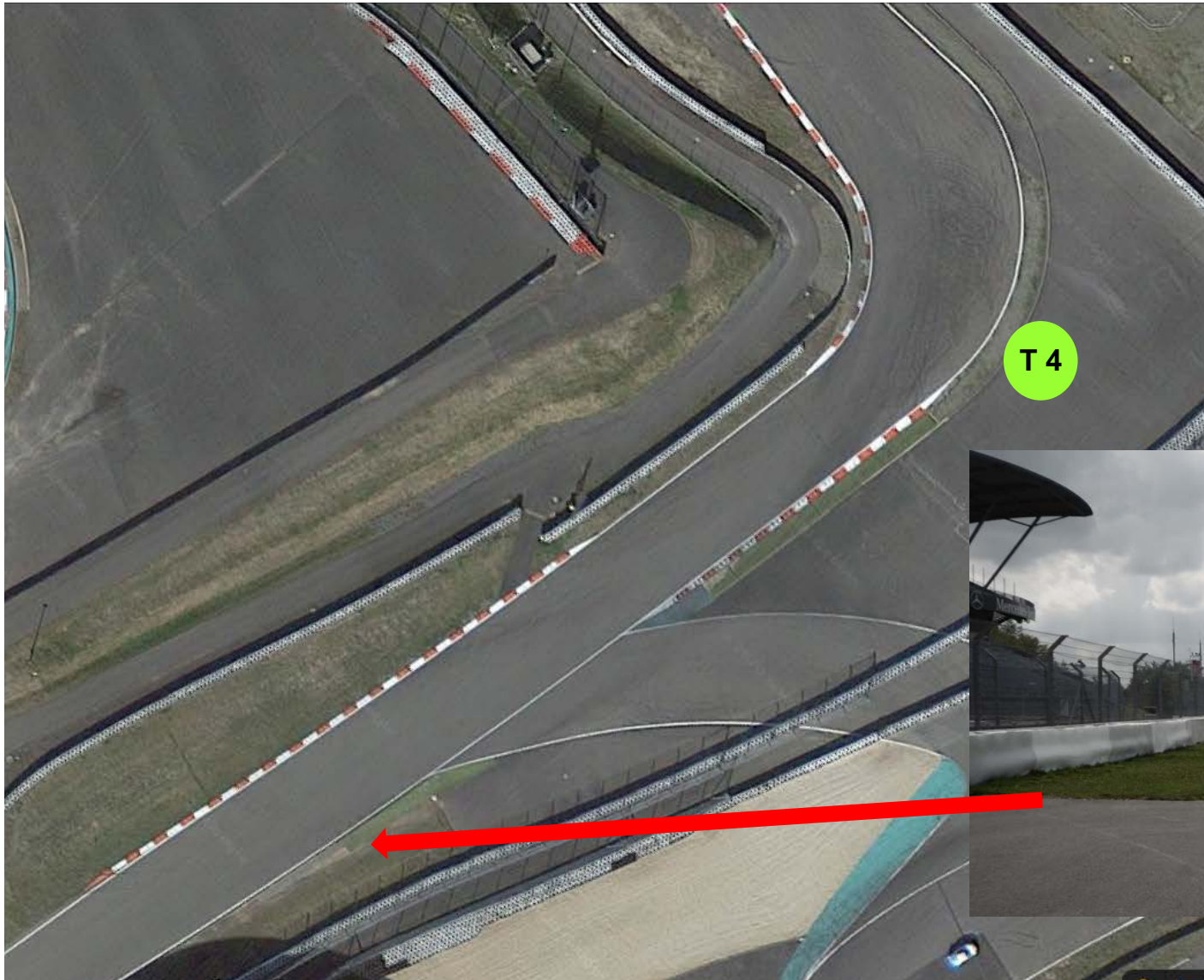
See bulletin from the stewards



APEX TURN 1



EXIT TURN 4



CONTACT



Mail: alain@sro-motorsports.com

During sessions (only): messaging App "Race Director" - Everybody messages



